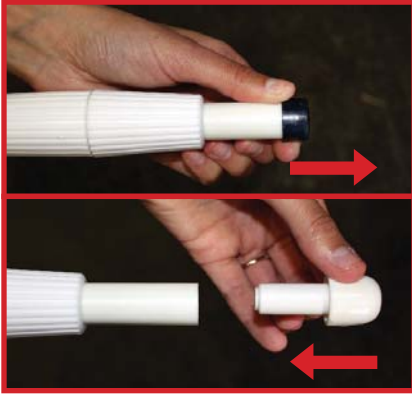


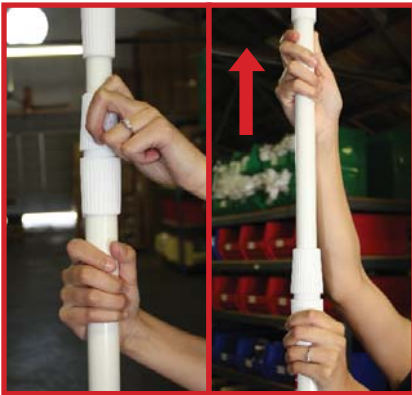
Half Drop & Tear Drop Pole Assembly



1. Remove the Black Cap from the end of the Feather Flagpole and replace it with the mushroom cap from the pole extension kit.

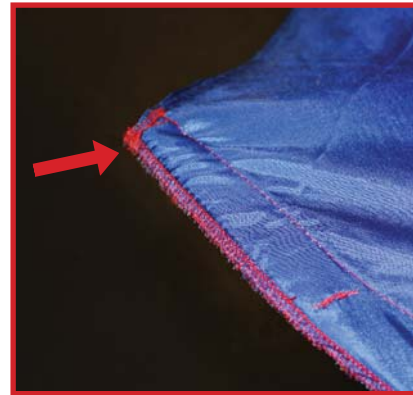


4. Slide the extension rods and flagpole thru the pole sleeve of the flag.

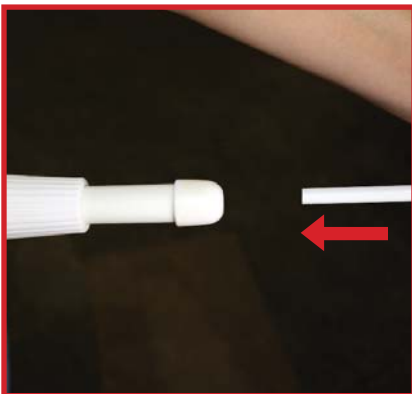


2. Extend the Feather Flagpole so that the two segments are about 2-3 feet extended. You can adjust later if needed.

**DO NOT OVERTIGHTEN!!
PLASTIC THREADS MAY STRIP**



5. **MAKE SURE** that the tip of the rod is in the reinforced pocket at the end of the pole sleeve!!



3. Insert the **LONGER** of the two pieces from the Pole Extension Kit (approx 4' piece) into the Mushroom Cap.

SHORTER PIECE IS NEEDED FOR TEAR DROP FLAGS ONLY



6. Pull the flag down to create the curve in the flag. You do not need to have extremely tight, just enough to hold the curve. Using the included zip tie secure flag to pole as shown.